
**United States Army Corps of
Engineers, Alaska District**

**Phase II Remedial Investigation
Gambell,
St. Lawrence Island, Alaska**

Photographs - August, 1996



MONTGOMERY WATSON

TABLE OF CONTENTS - PHOTOGRAPHS

1	Village of Gambell
2	North Beach
3	Troutman Lake
4	Site 1
5	Site 2
6	Site 3/1
7	Site 4
8	Site 4 - Transformers
9	Site 5
10	Infiltration Gallery
11	Geophysical Survey
12	Radiological Survey
13	Miscellaneous

UNITED STATES ARMY ENGINEER DISTRICT, ALASKA
GAMBELL, ALASKA PHASE II REMEDIAL INVESTIGATION
JUNE 1996



Aerial view of Gambell facing South



Aerial view of Gambell facing South

UNITED STATES ARMY ENGINEER DISTRICT, ALASKA
GAMBELL, ALASKA PHASE II REMEDIAL INVESTIGATION
JUNE 1996



Village of Gambell facing West

UNITED STATES ARMY ENGINEER DISTRICT, ALASKA
GAMBELL, ALASKA PHASE II REMEDIAL INVESTIGATION
JUNE 1996



Aerial view of Gambell facing South



Bering Sea facing Northwest

UNITED STATES ARMY ENGINEER DISTRICT, ALASKA
GAMBELL, ALASKA PHASE II REMEDIAL INVESTIGATION
JUNE 1996



Aerial view of Gambell facing East



Aerial view of Gambell facing South

UNITED STATES ARMY ENGINEER DISTRICT, ALASKA
GAMBELL, ALASKA PHASE II REMEDIAL INVESTIGATION
JUNE 1996



Bringing new homes into Gambell



Gambell village from runway, facing North

UNITED STATES ARMY ENGINEER DISTRICT, ALASKA
GAMBELL, ALASKA PHASE II REMEDIAL INVESTIGATION
JUNE 1996



Debris found along ATV trail along Gambell runway



Village of Gambell facing Northeast

UNITED STATES ARMY ENGINEER DISTRICT, ALASKA
GAMBELL, ALASKA PHASE II REMEDIAL INVESTIGATION
JUNE 1996



Gambell runway



ATV trail along East side of Gambell runway, facing South

UNITED STATES ARMY ENGINEER DISTRICT, ALASKA
GAMBELL, ALASKA PHASE II REMEDIAL INVESTIGATION
AUGUST 1996



North Beach facing East from Site 1/Area 1B

UNITED STATES ARMY ENGINEER DISTRICT, ALASKA
GAMBELL, ALASKA PHASE II REMEDIAL INVESTIGATION
AUGUST 1996



North Beach facing West from Eastern most point

UNITED STATES ARMY ENGINEER DISTRICT, ALASKA
GAMBELL, ALASKA PHASE II REMEDIAL INVESTIGATION
AUGUST 1996



North Beach facing South, taken from close to waters edge

UNITED STATES ARMY ENGINEER DISTRICT, ALASKA
GAMBELL, ALASKA PHASE II REMEDIAL INVESTIGATION
AUGUST 1996



North Beach facing South, taken from close to waters edge

UNITED STATES ARMY ENGINEER DISTRICT, ALASKA
GAMBELL, ALASKA PHASE II REMEDIAL INVESTIGATION
AUGUST 1996



North Beach facing South, taken from close to waters edge

UNITED STATES ARMY ENGINEER DISTRICT, ALASKA
GAMBELL, ALASKA PHASE II REMEDIAL INVESTIGATION
AUGUST 1996



North Beach facing South, taken from close to waters edge

UNITED STATES ARMY ENGINEER DISTRICT, ALASKA
GAMBELL, ALASKA PHASE II REMEDIAL INVESTIGATION
AUGUST 1996



Eastern edge of North Beach (Photo 1 of 3)

UNITED STATES ARMY ENGINEER DISTRICT, ALASKA
GAMBELL, ALASKA PHASE II REMEDIAL INVESTIGATION
AUGUST 1996



Eastern edge of North Beach (Photo 2 of 3)

UNITED STATES ARMY ENGINEER DISTRICT, ALASKA
GAMBELL, ALASKA PHASE II REMEDIAL INVESTIGATION
AUGUST 1996



Eastern edge of North Beach (Photo 3 of 3)

UNITED STATES ARMY ENGINEER DISTRICT, ALASKA
GAMBELL, ALASKA PHASE II REMEDIAL INVESTIGATION
AUGUST 1996



Exposed landing mat at barge landing area

UNITED STATES ARMY ENGINEER DISTRICT, ALASKA
GAMBELL, ALASKA PHASE II REMEDIAL INVESTIGATION
AUGUST 1996



Facing East from Northwest edge of Troutman Lake

UNITED STATES ARMY ENGINEER DISTRICT, ALASKA
GAMBELL, ALASKA PHASE II REMEDIAL INVESTIGATION
AUGUST 1996



Facing South from Northwest edge of Troutman Lake

UNITED STATES ARMY ENGINEER DISTRICT, ALASKA
GAMBELL, ALASKA PHASE II REMEDIAL INVESTIGATION
JUNE 1996



Small Bunker East of Troutman Lake



Small Bunker East of Troutman Lake

UNITED STATES ARMY ENGINEER DISTRICT, ALASKA
GAMBELL, ALASKA PHASE II REMEDIAL INVESTIGATION
AUGUST 1996



Filter material near Troutman Lake

UNITED STATES ARMY ENGINEER DISTRICT, ALASKA
GAMBELL, ALASKA PHASE II REMEDIAL INVESTIGATION
AUGUST 1996



Exposed Landing Mat at Site 1/Area 1A, facing Southeast



Exposed Landing Mat at Site 1/Area 1A, facing South

UNITED STATES ARMY ENGINEER DISTRICT, ALASKA
GAMBELL, ALASKA PHASE II REMEDIAL INVESTIGATION
AUGUST 1996



Exposed crane at Site 1/Area 1A, photo facing South

UNITED STATES ARMY ENGINEER DISTRICT, ALASKA
GAMBELL, ALASKA PHASE II REMEDIAL INVESTIGATION
AUGUST 1996



Stained soil at Site 2



Exposed fireplace at Site 2

UNITED STATES ARMY ENGINEER DISTRICT, ALASKA
GAMBELL, ALASKA PHASE II REMEDIAL INVESTIGATION
AUGUST 1996



Exposed Concrete Slab at Site 2

UNITED STATES ARMY ENGINEER DISTRICT, ALASKA
GAMBELL, ALASKA PHASE II REMEDIAL INVESTIGATION
AUGUST 1996



Surface soil sampling st stained area at site 2



Surface soil sampling at stained area at Site 2

UNITED STATES ARMY ENGINEER DISTRICT, ALASKA
GAMBELL, ALASKA PHASE II REMEDIAL INVESTIGATION
AUGUST 1996



Surface Soil Sampling at Site 3/1 MW9



Surface Soil Sampling at Site 3/1 MW9

UNITED STATES ARMY ENGINEER DISTRICT, ALASKA
GAMBELL, ALASKA PHASE II REMEDIAL INVESTIGATION
AUGUST 1996



Surface Soil Sampling at Site 3/1 MW9
Sample Numbers 96GAM001SS03 and GAM004SS03

UNITED STATES ARMY ENGINEER DISTRICT, ALASKA
GAMBELL, ALASKA PHASE II REMEDIAL INVESTIGATION
AUGUST 1996



Wooden debris at Site4/Area 4B



Surface Soil Sampling at Site 4/Area 4B
Sample Numbers: 96GAM001SS4B and 96GAM004SS4B

UNITED STATES ARMY ENGINEER DISTRICT, ALASKA
GAMBELL, ALASKA PHASE II REMEDIAL INVESTIGATION
AUGUST 1996



Surface Soil Sampling at Site 4/Area 4B



Surface Soil Sampling at Site4/Area 4B. Foreground is 96GAM003SS4B, background is motor and burned wood

UNITED STATES ARMY ENGINEER DISTRICT, ALASKA
GAMBELL, ALASKA PHASE II REMEDIAL INVESTIGATION
AUGUST 1996



Surface Soil Sampling at Site 4/Area 4B, facing North



Surface Soil Sampling at Site 4/Area 4B, facing East

UNITED STATES ARMY ENGINEER DISTRICT, ALASKA
GAMBELL, ALASKA PHASE II REMEDIAL INVESTIGATION
AUGUST 1996



Ladder approximately 300 feet West of stained area at Site 4/Area 4B at edge of mountain



Car part found on top of mountain below Site 4/Area 4B and 4D

UNITED STATES ARMY ENGINEER DISTRICT, ALASKA
GAMBELL, ALASKA PHASE II REMEDIAL INVESTIGATION
JUNE 1996



Aerial view of Gambell with Troutman Lake to the right, facing East



Gambell Village from runway with Troutman Lake at right, facing Northeast

UNITED STATES ARMY ENGINEER DISTRICT, ALASKA
GAMBELL, ALASKA PHASE II REMEDIAL INVESTIGATION
JUNE 1996



Transformers found in mountainside drainage during preliminary Phase II Investigation



Wipe sampling of Transformers at Site 4/Area 4D

UNITED STATES ARMY ENGINEER DISTRICT, ALASKA
GAMBELL, ALASKA PHASE II REMEDIAL INVESTIGATION
JUNE 1996



Victor Harris and Elise Tuzman (Montgomery Watson) wipe sampling of Transformers at Site 4/Area 4D



Wipe Sampling at Transformer 1 at Site 4/Area 4D. Sample #96GAM001WI

UNITED STATES ARMY ENGINEER DISTRICT, ALASKA
GAMBELL, ALASKA
PHASE II REMEDIAL INVESTIGATION
JUNE 1996



Transformers 1 & 2 at Site 4/Area 4D, facing West

UNITED STATES ARMY ENGINEER DISTRICT, ALASKA
GAMBELL, ALASKA PHASE II REMEDIAL INVESTIGATION
JUNE 1996



Wipe Sampling at Transformer 1 at Site 4/Area 4D. Sample #96GAM001WI



Transformer 1 at Site 4/Area 4D

UNITED STATES ARMY ENGINEER DISTRICT, ALASKA
GAMBELL, ALASKA PHASE II REMEDIAL INVESTIGATION
JUNE 1996



Transformer 2 at Site 4/Area 4D



Wipe Sampling of Transformer 2 at Site 4/Area 4D

UNITED STATES ARMY ENGINEER DISTRICT, ALASKA
GAMBELL, ALASKA PHASE II REMEDIAL INVESTIGATION
JUNE 1996



Transformer 3 at Site 4/Area 4D.



Wipe Sample of Transformer 3 at Site 4/Area 4D. Sample #96GAM003WI

UNITED STATES ARMY ENGINEER DISTRICT, ALASKA
GAMBELL, ALASKA PHASE II REMEDIAL INVESTIGATION
JUNE 1996



Wayne Rowe (Alaska District), and Elise Tuzman(Montgomery Watson) walking down Sevuokuk Mountain after wipe down sampling at Site 4/Area 4D, facing Southwest.



Wayne Rowe (Alaska District) and Elise Tuzman (Montgomery Watson) walking down Sevukuk Mountain toward VSW Connex

UNITED STATES ARMY ENGINEER DISTRICT, ALASKA
GAMBELL, ALASKA PHASE II REMEDIAL INVESTIGATION
JUNE 1996



Wayne Rowe (Alaska District) walking down Sevukuk Mountain toward Pumphouse



Troutman Lake, facing West

UNITED STATES ARMY ENGINEER DISTRICT, ALASKA
GAMBELL, ALASKA PHASE II REMEDIAL INVESTIGATION
AUGUST 1996



VSW Complex and Construction



Site 5 and VSW Connex

UNITED STATES ARMY ENGINEER DISTRICT, ALASKA
GAMBELL, ALASKA
PHASE II REMEDIAL INVESTIGATION
AUGUST 1996



VSW pit South of Connex

UNITED STATES ARMY ENGINEER DISTRICT, ALASKA
GAMBELL, ALASKA PHASE II REMEDIAL INVESTIGATION
AUGUST 1996



VSW Construction at Site 5



Groundwater Sampling at Site 5/Mw 16

UNITED STATES ARMY ENGINEER DISTRICT, ALASKA
GAMBELL, ALASKA PHASE II REMEDIAL INVESTIGATION
AUGUST 1996



Groundwater Sampling at Site 5/Mw16



Groundwater Sampling at Site 5/MW 16. Sample #96GAMMW16002

UNITED STATES ARMY ENGINEER DISTRICT, ALASKA
GAMBELL, ALASKA PHASE II REMEDIAL INVESTIGATION
AUGUST 1996



Groundwater Sampling at Site 5/MW16. Sample #96GAMMW16002



Groundwater Sampling at Site 5/MW16. Sample #96GAMMW15001

UNITED STATES ARMY ENGINEER DISTRICT, ALASKA
GAMBELL, ALASKA PHASE II REMEDIAL INVESTIGATION
AUGUST 1996



Ian Bishop (Golder Assoc.) doing magnetometry survey over Site 5



Ian Bishop doing magnetometry survey over Site 5

UNITED STATES ARMY ENGINEER DISTRICT, ALASKA
GAMBELL, ALASKA PHASE II REMEDIAL INVESTIGATION
AUGUST 1996



Water sampling of infiltration gallery for PCBs and BTEX. Sample #96GAMPMPHS003



Water Sampling of infiltration gallery for PCBs and BTEX. Sample #96GAMPMPHS003

UNITED STATES ARMY ENGINEER DISTRICT, ALASKA
GAMBELL, ALASKA PHASE II REMEDIAL INVESTIGATION
AUGUST 1996



Ian Bishop (Golder Assoc.) performing EM-31 over Site 5



Ian Bishop (Golder Assoc.) doing magnetometry survey over Site 5

UNITED STATES ARMY ENGINEER DISTRICT, ALASKA
GAMBELL, ALASKA PHASE II REMEDIAL INVESTIGATION
AUGUST 1996



Ian Bishop (Golder Assoc.)



Site 5 Geophysical Grid, facing West

UNITED STATES ARMY ENGINEER DISTRICT, ALASKA
GAMBELL, ALASKA PHASE II REMEDIAL INVESTIGATION
AUGUST 1996



Ian Bishop (Golder Assoc.), performing EM-31 survey site of reported ammunition location.



Ian Bishop (Golder Assoc.) performing EM-31 over Site 5 Geophysical Grid.

UNITED STATES ARMY ENGINEER DISTRICT, ALASKA
GAMBELL, ALASKA PHASE II REMEDIAL INVESTIGATION
AUGUST 1996



Geophysical grid at Site 5

UNITED STATES ARMY ENGINEER DISTRICT, ALASKA
NORTHEAST CAPE, ALASKA PHASE II REMEDIAL INVESTIGATION
AUGUST 1996



Site 5 Geophysical Grid (right side of photo shows large boulder that tramway cables were reportedly tied down to.)

UNITED STATES ARMY ENGINEER DISTRICT, ALASKA
GAMBELL, ALASKA PHASE II REMEDIAL INVESTIGATION
AUGUST 1996



Radiological surveying at Site 2, stained area

UNITED STATES ARMY ENGINEER DISTRICT, ALASKA
GAMBELL, ALASKA PHASE II REMEDIAL INVESTIGATION
JUNE 1996



Boulder that reportedly held down tramway cables



Boulder that reportedly held down tramway cables

**United States Army Corps of
Engineers, Alaska District**

**Phase II Remedial Investigation
Northeast Cape,
St. Lawrence Island, Alaska**

Photographs - August, 1996



MONTGOMERY WATSON

TABLE OF CONTENTS - PHOTOGRAPHS

1	Northeast Cape
2	Drainage Basin Investigation
3	Stream Flow Measurements
4	Borrow Area Recon
5	Site 8 - Fuel Line Leak
6	Site 10/11 - Former Drum Storage and Fuel Storage
7	Site 13 - Heat and Electric
8	Site 14 - Emergency Heat/Electric Operations
9	Site 16 Paint Dope Storage
10	Site 18 - Housing Complex
11	Site 21 - Waste Water Facility
12	Site 27 - Fuel Dispensing Island
13	Biological Steam Sample
14	Tank/Mechanic Pit Sampling
15	"Danger" Sign Posting
16	Military Water Wells
17	Wire Recon
18	Switch Investigation Site 18, Building 99
19	Basement Draining Site 18/14, Building 99/101 W
20	CON/HTW
21	Miscellaneous: Tar Spill, Tractors, and DC-3

UNITED STATES ARMY ENGINEER DISTRICT, ALASKA
NORTHEAST CAPE, ALASKA PHASE II REMEDIAL INVESTIGATION,
AUGUST 1996



Aerial view of Bering Sea, looking Northeast



Site 4 Native Camp, looking North

UNITED STATES ARMY ENGINEER DISTRICT, ALASKA
NORTHEAST CAPE, ALASKA PHASE II REMEDIAL INVESTIGATION,
AUGUST 1996



Main Complex looking South



Looking Southeast - Main Camp, Building 98 at right

UNITED STATES ARMY ENGINEER DISTRICT, ALASKA
NORTHEAST CAPE, ALASKA PHASE II REMEDIAL INVESTIGATION,
AUGUST 1996



Site 2 looking South, runway in foreground



Station access road running North to South. (View looking North)

UNITED STATES ARMY ENGINEER DISTRICT, ALASKA
NORTHEAST CAPE, ALASKA PHASE II REMEDIAL INVESTIGATION,
AUGUST 1996



Drainage Basin Looking Southeast



Drainage Basin, view from Northeast

UNITED STATES ARMY ENGINEER DISTRICT, ALASKA
NORTHEAST CAPE, ALASKA PHASE II REMEDIAL INVESTIGATION
AUGUST 1996



Looking North to main complex

UNITED STATES ARMY ENGINEER DISTRICT, ALASKA
NORTHEAST CAPE, ALASKA PHASE II REMEDIAL INVESTIGATION
AUGUST 1996



Drainage Basin - Looking Southwest toward main camp



View from North of Main Complex, Drainage Basin visible at left

UNITED STATES ARMY ENGINEER DISTRICT, ALASKA
NORTHEAST CAPE, ALASKA PHASE II REMEDIAL INVESTIGATION
AUGUST 1996



Drainage Basin to the East



Drainage Basin : View from South

UNITED STATES ARMY ENGINEER DISTRICT, ALASKA
NORTHEAST CAPE, ALASKA PHASE II REMEDIAL INVESTIGATION
AUGUST 1996



Drainage Basin - View from South



View from East, Drainage Basin, located at Stream flow #3, Note dense vegetation

UNITED STATES ARMY ENGINEER DISTRICT, ALASKA
NORTHEAST CAPE, ALASKA PHASE II REMEDIAL INVESTIGATION
AUGUST 1996



Drainage Basin, View from Northeast



Site 11 to right (Storage tanks), Site 10 to left

UNITED STATES ARMY ENGINEER DISTRICT, ALASKA
NORTHEAST CAPE, ALASKA
PHASE II REMEDIAL INVESTIGATION
AUGUST 1996



Drainage Basin, culvert, View from South

UNITED STATES ARMY ENGINEER DISTRICT, ALASKA
NORTHEAST CAPE, ALASKA PHASE II REMEDIAL INVESTIGATION
AUGUST 1996



Drainage Basin, view from North, Site 11 in background



Drainage Basin : View from West; Note dense vegetation

UNITED STATES ARMY ENGINEER DISTRICT, ALASKA
NORTHEAST CAPE, ALASKA PHASE II REMEDIAL INVESTIGATION
AUGUST 1996



Drainage Basin, View from North, Pole #1 in center



Drainage Basin, View from South, Pole 1 and 2 in foreground respectively
Note corrugated metal sheet; Doug Quist (Montgomery Watson)

UNITED STATES ARMY ENGINEER DISTRICT, ALASKA
NORTHEAST CAPE, ALASKA PHASE II REMEDIAL INVESTIGATION
AUGUST 1996



Drainage Basin, looking North



Drainage Basin, view from North, Main Site in right background, Site 11 and White Alice Station in left background. Note corrugated metal sheet & empty 55 gal drum

Doug Quist (Montgomery Watson)

UNITED STATES ARMY ENGINEER DISTRICT, ALASKA
NORTHEAST CAPE, ALASKA PHASE II REMEDIAL INVESTIGATION
AUGUST 1996



Drainage Basin, View from South

UNITED STATES ARMY ENGINEER DISTRICT, ALASKA
NORTHEAST CAPE, ALASKA
PHASE II REMEDIAL INVESTIGATION
AUGUST 1996



Stream Flow Measurement #1, Unnamed creek
Upstream from confluence of Drainage Basin
Note: Flotilla, View from West

UNITED STATES ARMY ENGINEER DISTRICT, ALASKA
NORTHEAST CAPE, ALASKA PHASE II REMEDIAL INVESTIGATION,
AUGUST 1996



Stream Flow Measurement #2, Stream leads to unnamed creek, View from South
Doug Quist (Montgomery Watson)



Stream Flow Measurement #2, Top View

UNITED STATES ARMY ENGINEER DISTRICT, ALASKA
NORTHEAST CAPE, ALASKA PHASE II REMEDIAL INVESTIGATION,
AUGUST 1996



Stream Flow Measurement #1, Unnamed creek upstream from confluence of Drainage basin; Victor Harris (Montgomery Watson)



Streamflow measurement #2, Stream leads to unnamed creek, view from North
Doug Quist (Montgomery Watson)

UNITED STATES ARMY ENGINEER DISTRICT, ALASKA
NORTHEAST CAPE, ALASKA PHASE II REMEDIAL INVESTIGATION
AUGUST 1996



Drainage Basin, Stream Flow #3, Looking West near Pole #1
Note: dense vegetation

UNITED STATES ARMY ENGINEER DISTRICT, ALASKA
NORTHEAST CAPE, ALASKA PHASE II REMEDIAL INVESTIGATION,
AUGUST 1996



Drainage Basin; view from North, located just North of Site 27.

Stream Flow measurement #5

Note: drums and surface soil staining

Site 11 in left background

UNITED STATES ARMY ENGINEER DISTRICT, ALASKA
NORTHEAST CAPE, ALASKA PHASE II REMEDIAL INVESTIGATION,
AUGUST 1996



Drainage Basin; view from South, located just North of Site 27.
Stream Flow measurement #6
Note: 55 gal. drum (empty)
Doug Quist (Montgomery Watson)

UNITED STATES ARMY ENGINEER DISTRICT, ALASKA
NORTHEAST CAPE, ALASKA PHASE II REMEDIAL INVESTIGATION,
AUGUST 1996



Drainage Basin; view from North, located just North of Site 27.

Stream Flow measurement #6

Note empty 55 gal. drum, manhole in center.

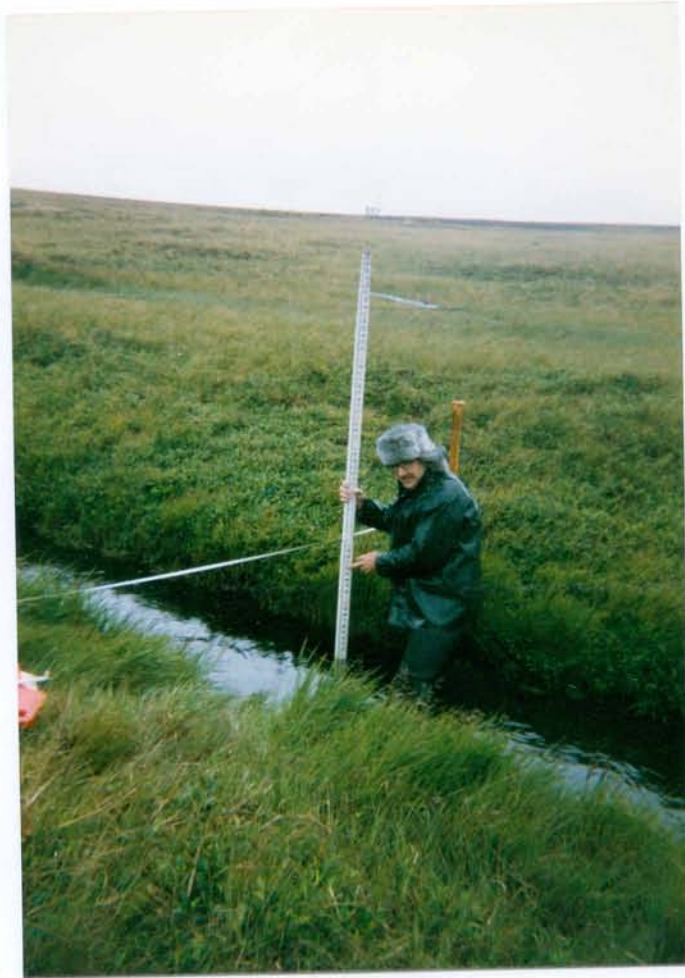
Site 13 in background

UNITED STATES ARMY ENGINEER DISTRICT, ALASKA
NORTHEAST CAPE, ALASKA PHASE II REMEDIAL INVESTIGATION,
AUGUST 1996



Stream Flow Measurement #8, Near Bridge at Site #2
Note Flotilla - used to time flow avg. of three clockings

UNITED STATES ARMY ENGINEER DISTRICT, ALASKA
NORTHEAST CAPE, ALASKA
PHASE II REMEDIAL INVESTIGATION
AUGUST 1996



Stream Flow Measurement #8, Near bridge at Site #2
Victor Harris (Montgomery Watson)

UNITED STATES ARMY ENGINEER DISTRICT, ALASKA
NORTHEAST CAPE, ALASKA
PHASE II REMEDIAL INVESTIGATION
AUGUST 1996



Stream Flow Measurement #8, Near bridge at Site #2
Victor Harris (Montgomery Watson)

UNITED STATES ARMY ENGINEER DISTRICT, ALASKA
NORTHEAST CAPE, ALASKA PHASE II REMEDIAL INVESTIGATION
AUGUST 1996



Looking South toward Borrow area

UNITED STATES ARMY ENGINEER DISTRICT, ALASKA
NORTHEAST CAPE, ALASKA | PHASE II REMEDIAL INVESTIGATION
AUGUST 1996



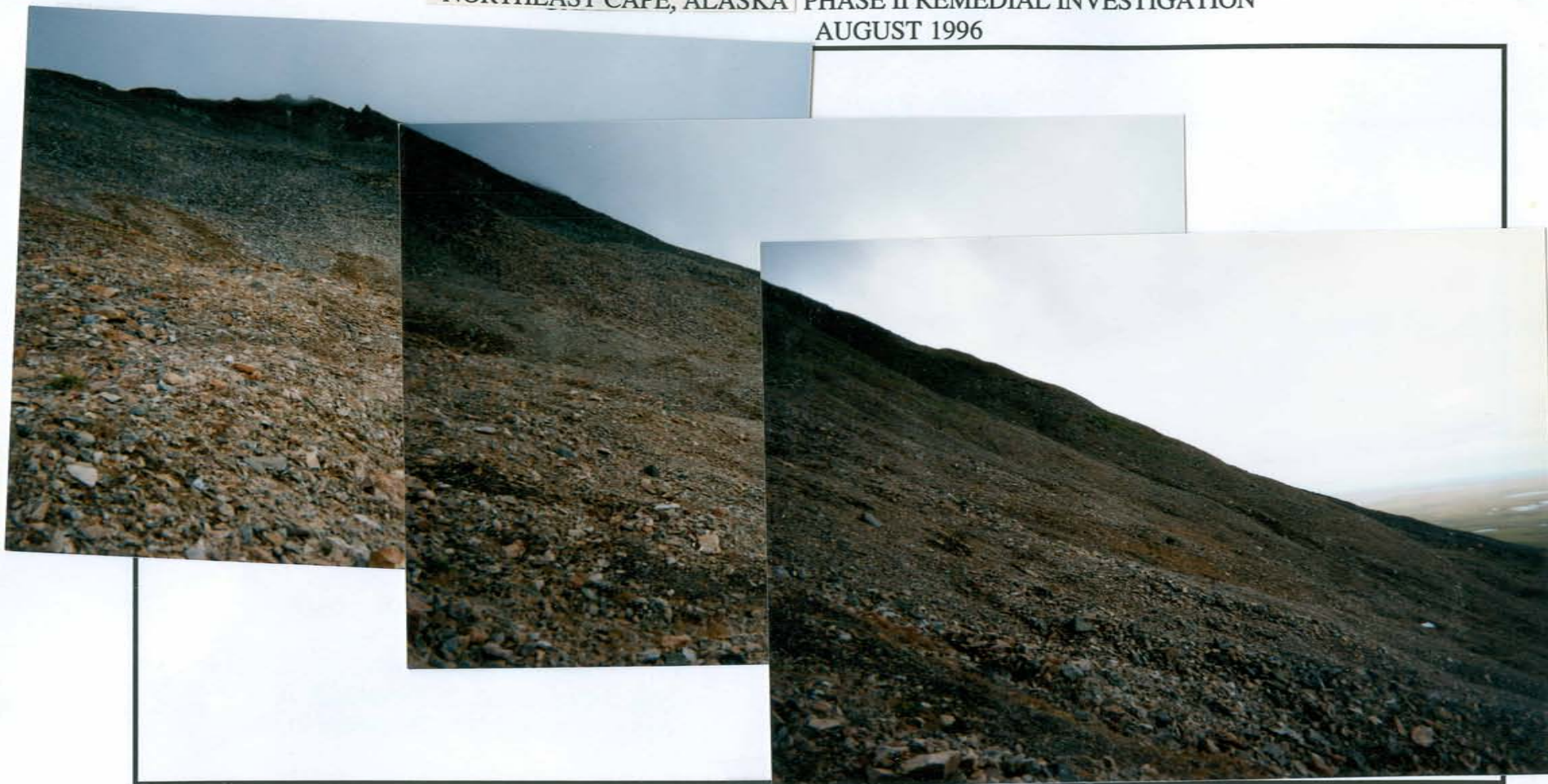
Looking South to North from Borrow area

UNITED STATES ARMY ENGINEER DISTRICT, ALASKA
NORTHEAST CAPE, ALASKA PHASE II REMEDIAL INVESTIGATION
AUGUST 1996



Looking South to North from Borrow area

UNITED STATES ARMY ENGINEER DISTRICT, ALASKA
NORTHEAST CAPE, ALASKA | PHASE II REMEDIAL INVESTIGATION
AUGUST 1996



Looking South to North from Borrow area

UNITED STATES ARMY ENGINEER DISTRICT, ALASKA
NORTHEAST CAPE, ALASKA PHASE II REMEDIAL INVESTIGATION
AUGUST 1996



Borrow area looking West, Colluvial Slope. Note Loading Ramp in background, and tape measure in foreground



Loading Dock

UNITED STATES ARMY ENGINEER DISTRICT, ALASKA
NORTHEAST CAPE, ALASKA PHASE II REMEDIAL INVESTIGATION
AUGUST 1996



Loading Dock - Main Complex in background



Barrow Pit - Native Material, looking West, Colluvial Slope

UNITED STATES ARMY ENGINEER DISTRICT, ALASKA
NORTHEAST CAPE, ALASKA
PHASE II REMEDIAL INVESTIGATION
AUGUST 1996



Looking North toward Main Camp from Borrow area.
Note: foreground: scale tape, midground: loading ramp, and
background: Main Camp

UNITED STATES ARMY ENGINEER DISTRICT, ALASKA
NORTHEAST CAPE, ALASKA
PHASE II REMEDIAL INVESTIGATION
AUGUST 1996



Spring at Base of Colluvial Slope

UNITED STATES ARMY ENGINEER DISTRICT, ALASKA
NORTHEAST CAPE, ALASKA PHASE II REMEDIAL INVESTIGATION
AUGUST 1996



At Borrow area, looking East-Southeast. Note: White Alice Site



Looking Southeast

UNITED STATES ARMY ENGINEER DISTRICT,
ALASKA
NORTHEAST CAPE, ALASKA
PHASE II REMEDIAL INVESTIGATION
AUGUST 1996



Site 8: Fuel Line Leak, looking Southwest toward Main
Complex

UNITED STATES ARMY ENGINEER DISTRICT, ALASKA
NORTHEAST CAPE, ALASKA PHASE II REMEDIAL INVESTIGATION
AUGUST 1996



Site 10, looking Southeast. Note stained soil



Site 10, looking Southeast. Note stained soil

UNITED STATES ARMY ENGINEER DISTRICT, ALASKA
NORTHEAST CAPE, ALASKA PHASE II REMEDIAL INVESTIGATION
AUGUST 1996



Site 10 - surface soil, Sample - SS106



Site 10, Surface soil sample - SS107

UNITED STATES ARMY ENGINEER DISTRICT, ALASKA
NORTHEAST CAPE, ALASKA PHASE II REMEDIAL INVESTIGATION
AUGUST 1996



Site 10: Surface soil sample SS107 in background, SS108 in foreground



Site 10; Surface soil sample - SS108

UNITED STATES ARMY ENGINEER DISTRICT, ALASKA
NORTHEAST CAPE, ALASKA PHASE II REMEDIAL INVESTIGATION,
AUGUST 1996



Site 13 Building 110-Note Stained Soils-Site 27 in Forground-View from East



Site 13 Building 110 View from South. Southeast Corner-Note Stained Soil Around Building

UNITED STATES ARMY ENGINEER DISTRICT, ALASKA
NORTHEAST CAPE, ALASKA PHASE II REMEDIAL INVESTIGATION,
AUGUST 1996



Site 13 Buliding 110 in Background-Foreground Drainage Basin-View form North



Site 13 Building 110-View form North

UNITED STATES ARMY ENGINEER DISTRICT, ALASKA
NORTHEAST CAPE, ALASKA
PHASE II REMEDIAL INVESTIGATION
AUGUST 1996



Site 13: South side of Building 110 East end, view from East
Note : Stained Surface Soil around building

UNITED STATES ARMY ENGINEER DISTRICT, ALASKA
NORTHEAST CAPE, ALASKA PHASE II REMEDIAL INVESTIGATION
AUGUST 1996



Site 13 and 27 - View from South looking North

UNITED STATES ARMY ENGINEER DISTRICT, ALASKA
NORTHEAST CAPE, ALASKA PHASE II REMEDIAL INVESTIGATION,
AUGUST 1996



Site 13 Building 110, Surface Soil Sample - SS109



Site 13 Building 110, Surface Soil Sample - SS109

UNITED STATES ARMY ENGINEER DISTRICT, ALASKA
NORTHEAST CAPE, ALASKA
PHASE II REMEDIAL INVESTIGATION
AUGUST 1996



Site 13 Northeast corner, Surface Soil Sample - SS109

UNITED STATES ARMY ENGINEER DISTRICT, ALASKA
NORTHEAST CAPE, ALASKA PHASE II REMEDIAL INVESTIGATION
AUGUST 1996

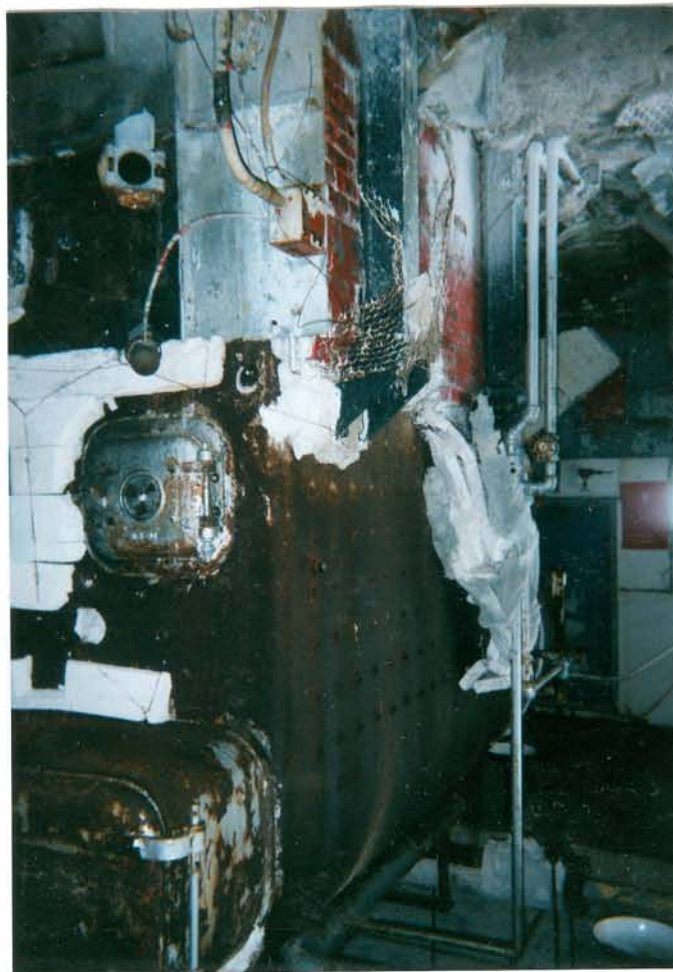


Site 13 Surface Soil Sample - SS109



Site 13 Building 110, Surface Soil Samples - SS106, SS107, and SS108

UNITED STATES ARMY ENGINEER DISTRICT, ALASKA
NORTHEAST CAPE, ALASKA
PHASE II REMEDIAL INVESTIGATION
AUGUST 1996



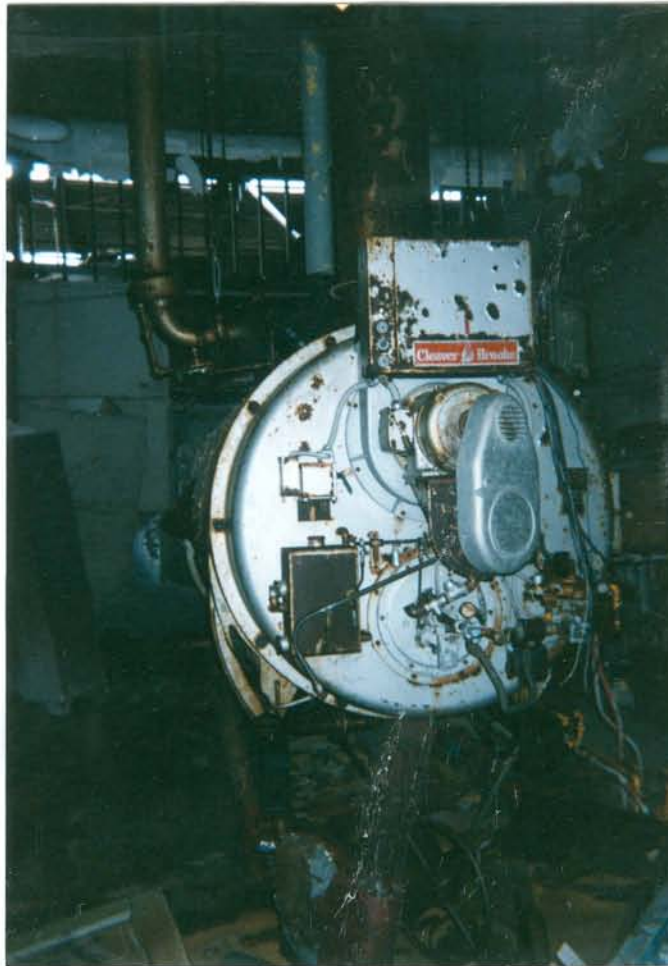
Site 13, Interior - Generator

UNITED STATES ARMY ENGINEER DISTRICT, ALASKA
NORTHEAST CAPE, ALASKA
PHASE II REMEDIAL INVESTIGATION
AUGUST 1996



Site 13, Interior - Generator; Note: House PACM

UNITED STATES ARMY ENGINEER DISTRICT, ALASKA
NORTHEAST CAPE, ALASKA
PHASE II REMEDIAL INVESTIGATION
AUGUST 1996



Site 13, Interior - Generator

UNITED STATES ARMY ENGINEER DISTRICT, ALASKA
NORTHEAST CAPE, ALASKA PHASE II REMEDIAL INVESTIGATION,
AUGUST 1996



Site 14 North side, Heat and Electrical Building (emergency). Note: Electrical conduit box.



Site 14, view from Southwest. Emergency Heat and Electrical Building. Drum 14-2 in center (filled with antifreeze)

UNITED STATES ARMY ENGINEER DISTRICT, ALASKA
NORTHEAST CAPE, ALASKA PHASE II REMEDIAL INVESTIGATION,
AUGUST 1996



Site 14 Emergency Heat and Electrical Building, view from Northeast



Site 14 Emergency Heat and Electric Building. View from Northwest, East side

UNITED STATES ARMY ENGINEER DISTRICT, ALASKA
NORTHEAST CAPE, ALASKA PHASE II REMEDIAL INVESTIGATION
AUGUST 1996



Site 14 Emergency Heat and Electrical Building, View from Northeast

UNITED STATES ARMY ENGINEER DISTRICT, ALASKA
NORTHEAST CAPE, ALASKA PHASE II REMEDIAL INVESTIGATION
AUGUST 1996



Site 16: Paint Dope Storage Building, View from North, Building in center background
Area of reported fuel burning (Toolic, 96) in foreground

UNITED STATES ARMY ENGINEER DISTRICT,
ALASKA
NORTHEAST CAPE, ALASKA
PHASE II REMEDIAL INVESTIGATION
AUGUST 1996



Site 16: Paint and Dope Storage Building, View from East side of
building. MW 16-1 in foreground
Note: Paint spill (solidified)

UNITED STATES ARMY ENGINEER DISTRICT, ALASKA
NORTHEAST CAPE, ALASKA PHASE II REMEDIAL INVESTIGATION
AUGUST 1996



Site 18: Dorm B. 101 East



Site 18: Mess Hall B. 106

UNITED STATES ARMY ENGINEER DISTRICT, ALASKA
NORTHEAST CAPE, ALASKA PHASE II REMEDIAL INVESTIGATION
AUGUST 1996



Site 18 Building 101 West: AST (500 gal.) ACM cover above opening to below ground plumbing room



Site 18 Building 101 West - Below ground plumbing room. PACM on elbows

UNITED STATES ARMY ENGINEER DISTRICT, ALASKA
NORTHEAST CAPE, ALASKA PHASE II REMEDIAL INVESTIGATION
JUNE 1996



Basement water sampling at Building 101. 96NEC001SW, 96NEC011SW-Dupe, and 96NEC021SW-Split



Site 18 Building 101 West: Below ground Plumbing Room, PACM on elbows.

UNITED STATES ARMY ENGINEER DISTRICT, ALASKA
NORTHEAST CAPE, ALASKA PHASE II REMEDIAL INVESTIGATION
AUGUST 1996



Site 18 West Site, Dorm 101 West
Site 22 West Side, Water Storage



Site 18: Dorm Building 100 North

UNITED STATES ARMY ENGINEER DISTRICT, ALASKA
NORTHEAST CAPE, ALASKA PHASE II REMEDIAL INVESTIGATION
AUGUST 1996



Site 18 Dorm B. 101 West, Dorm B. 101 East, Dorm B. 100 North, Dorm B. 100



Site 18, Dorm ,Building 101 West

UNITED STATES ARMY ENGINEER DISTRICT, ALASKA
NORTHEAST CAPE, ALASKA PHASE II REMEDIAL INVESTIGATION
AUGUST 1996



Site 18 Building 99 (Gym), South Side



Site 18, B.O.Q., Building 102

UNITED STATES ARMY ENGINEER DISTRICT, ALASKA
NORTHEAST CAPE, ALASKA PHASE II REMEDIAL INVESTIGATION
AUGUST 1996



South of Site 18 & 22, Debris on gravel pad. Site 11 in background

UNITED STATES ARMY ENGINEER DISTRICT, ALASKA
NORTHEAST CAPE, ALASKA PHASE II REMEDIAL INVESTIGATION,
AUGUST 1996



Site 21 view from Southeast, Wastewater Treatment Facility



Site 21, view from Northwest. Wastewater Treatment Facility
Note: 3 open Cistern Hatches and 2 vent pipes

UNITED STATES ARMY ENGINEER DISTRICT, ALASKA
NORTHEAST CAPE, ALASKA PHASE II REMEDIAL INVESTIGATION,
AUGUST 1996



Site 21 Wastewater Treatment Facility looking East. Note: vent pipes



Site 21 Wastewater Treatment Facility looking West. Note: vent pipes

UNITED STATES ARMY ENGINEER DISTRICT, ALASKA
NORTHEAST CAPE, ALASKA PHASE II REMEDIAL INVESTIGATION,
AUGUST 1996



Site 21 Wastewater Treatment Facility, view from North Standing water North of cisterns. Site 14 in background



Site 21 Wastewater Treatment Facility, view from West. Site 14 in background. Standing water South of Outfall

UNITED STATES ARMY ENGINEER DISTRICT, ALASKA
NORTHEAST CAPE, ALASKA
PHASE II REMEDIAL INVESTIGATION
AUGUST 1996



Site 21 Freestanding transformer of electrical conduit, located near Northeast corner of main camp pad. Label in center reads:

G&W Electrical Specialty Co., 3500 W. 127th Street, Blue Island, Ill USA

Type: AL Volts: 15KV Amp. :250
Cat. No. AL3372m Ser. No. C8097-63

UNITED STATES ARMY ENGINEER DISTRICT, ALASKA
NORTHEAST CAPE, ALASKA
PHASE II REMEDIAL INVESTIGATION
AUGUST 1996



Site 21: Wastewater Treatment Facility, view from West
Outfall terminus

UNITED STATES ARMY ENGINEER DISTRICT, ALASKA
NORTHEAST CAPE, ALASKA PHASE II REMEDIAL INVESTIGATION,
AUGUST 1996



Utilidoor running West, Site 21 in background



Northwest of Site 21, Standing water with floating organic material

UNITED STATES ARMY ENGINEER DISTRICT, ALASKA
NORTHEAST CAPE, ALASKA PHASE II REMEDIAL INVESTIGATION,
AUGUST 1996



Looking South toward Site 27s' culvert to Drainage Basin. Note: staining near culvert



Site 27 looking North

UNITED STATES ARMY ENGINEER DISTRICT, ALASKA
NORTHEAST CAPE, ALASKA PHASE II REMEDIAL INVESTIGATION,
AUGUST 1996



Site 27 looking South. Note: MW 27-1 and staining



Site 27 looking South, Diesel Fuel Pump Island

UNITED STATES ARMY ENGINEER DISTRICT, ALASKA
NORTHEAST CAPE, ALASKA PHASE II REMEDIAL INVESTIGATION,
AUGUST 1996



Site 27 looking South, Diesel Fuel Pump Island



Site 27: Diesel Fuel Pump Island, looking North. Note: Standing water, no sheen seen

UNITED STATES ARMY ENGINEER DISTRICT, ALASKA
NORTHEAST CAPE, ALASKA PHASE II REMEDIAL INVESTIGATION,
AUGUST 1996



Site 27 looking Northeast, MW-27-1, Site 11 in background



From Site 27 looking Southeast, Site 13 on left, Site 19 Building 108 on right

UNITED STATES ARMY ENGINEER DISTRICT, ALASKA
NORTHEAST CAPE, ALASKA PHASE II REMEDIAL INVESTIGATION
AUGUST 1996



Site 27: Diesel Fuel Pump Island, looking Southeast

UNITED STATES ARMY ENGINEER DISTRICT, ALASKA
NORTHEAST CAPE, ALASKA
PHASE II REMEDIAL INVESTIGATION
AUGUST 1996



Site 27: Diesel Fuel Pump Island, looking Sotheast

UNITED STATES ARMY ENGINEER DISTRICT, ALASKA
NORTHEAST CAPE, ALASKA PHASE II REMEDIAL INVESTIGATION
AUGUST 1996



Biological Stream Samples - Zooplankton, Benthic, and Plankton. Sample - 1



Biological Stream Samples - Zooplankton, Benthic, and Plankton. Sample - 4

UNITED STATES ARMY ENGINEER DISTRICT, ALASKA
NORTHEAST CAPE, ALASKA
PHASE II REMEDIAL INVESTIGATION
AUGUST 1996



Site 2 Tank 2-1 (Empty)

UNITED STATES ARMY ENGINEER DISTRICT, ALASKA
NORTHEAST CAPE, ALASKA
PHASE II REMEDIAL INVESTIGATION
AUGUST 1996



Site 4 Tank 4-1

UNITED STATES ARMY ENGINEER DISTRICT, ALASKA
NORTHEAST CAPE, ALASKA PHASE II REMEDIAL INVESTIGATION,
AUGUST 1996



Site 4 - Tank 4-1 (Empty); Tank 4-2 (Rain Water)



Site 4 - Tank 4-2

UNITED STATES ARMY ENGINEER DISTRICT, ALASKA
NORTHEAST CAPE, ALASKA PHASE II REMEDIAL INVESTIGATION,
AUGUST 1996



Site 11 and Site 12
Tanks 11-1, 11-2, 11-3
Tanks 12-1, 12-2

UNITED STATES ARMY ENGINEER DISTRICT, ALASKA
NORTHEAST CAPE, ALASKA PHASE II REMEDIAL INVESTIGATION,
AUGUST 1996



Site 13 - Tank 13-1 Empty



Site 13 Tank 13-2 - Full, Sampler - Doug Quist (Montgomery Watson)

UNITED STATES ARMY ENGINEER DISTRICT, ALASKA
NORTHEAST CAPE, ALASKA
PHASE II REMEDIAL INVESTIGATION
AUGUST 1996



Site 13, Tank 13-3 - Empty

UNITED STATES ARMY ENGINEER DISTRICT, ALASKA
NORTHEAST CAPE, ALASKA PHASE II REMEDIAL INVESTIGATION,
AUGUST 1996



Site 13 - Tank 13-4 (Empty)
Site 16 in background

UNITED STATES ARMY ENGINEER DISTRICT, ALASKA
NORTHEAST CAPE, ALASKA PHASE II REMEDIAL INVESTIGATION,
AUGUST 1996



Site 14 - Tank 14-1



Site 14 - Emergency Heat and Electric Building, View from Southeast, AST 14-1 in center

UNITED STATES ARMY ENGINEER DISTRICT, ALASKA
NORTHEAST CAPE, ALASKA PHASE II REMEDIAL INVESTIGATION,
AUGUST 1996



Site 14 - Emergency Heat and Electric Building
Tank 14-1 Sampling by Doug Quist (Montgomery Watson)

UNITED STATES ARMY ENGINEER DISTRICT, ALASKA
NORTHEAST CAPE, ALASKA
PHASE II REMEDIAL INVESTIGATION
AUGUST 1996



Site 14 Tank 14-1
Sampler Doug Quist (Montgomery Watson)
Note approximate fill level of rainwater (arrows)

UNITED STATES ARMY ENGINEER DISTRICT, ALASKA
NORTHEAST CAPE, ALASKA
PHASE II REMEDIAL INVESTIGATION
AUGUST 1996



Site 14 Tank 14-2
55-Gal. drum full of antifreeze
Bonnie McLean (Montgomery Watson)

UNITED STATES ARMY ENGINEER DISTRICT, ALASKA
NORTHEAST CAPE, ALASKA PHASE II REMEDIAL INVESTIGATION,
AUGUST 1996



Site 16 - Paint Dope Storage Building, View from North; Two drum rollers and AST 16-1 in foreground



Site 16 - Note: Sampling of Tank 16-1, 2 rollers to the North

UNITED STATES ARMY ENGINEER DISTRICT, ALASKA
NORTHEAST CAPE, ALASKA PHASE II REMEDIAL INVESTIGATION,
AUGUST 1996



Site 16 Tank 16-1, Looking Northwest; Sampling by Doug Quist (Montgomery Watson)



Site 16 Tank 16-1 Looking Northwest; Sampling by Doug Quist (Montgomery Watson)

UNITED STATES ARMY ENGINEER DISTRICT, ALASKA
NORTHEAST CAPE, ALASKA PHASE II REMEDIAL INVESTIGATION,
AUGUST 1996



Site 16 Tank 16-1 Looking Northwest, Sampling by Doug Quist (Montgomery Watson)



Site 16 Tank 16-1 Looking Northwest, Sampling by Doug Quist (Montgomery Watson)

UNITED STATES ARMY ENGINEER DISTRICT, ALASKA
NORTHEAST CAPE, ALASKA PHASE II REMEDIAL INVESTIGATION,
AUGUST 1996



Site 19 Tank 19-1 North of Building 108



Site 19 Tank 19-2 (Empty)

UNITED STATES ARMY ENGINEER DISTRICT, ALASKA
NORTHEAST CAPE, ALASKA
PHASE II REMEDIAL INVESTIGATION
AUGUST 1996



Site 19 Tank 19-1
Note fill line (arrows) Tank filled with antifreeze
Sampler Doug Quist (Montgomery Watson)

UNITED STATES ARMY ENGINEER DISTRICT, ALASKA
NORTHEAST CAPE, ALASKA PHASE II REMEDIAL INVESTIGATION,
AUGUST 1996



AST Tank located North of Main Camp, South of unnamed creek- Elmendorf AFB



1,000 gal. AST tank (empty). Located East of unnamed creek towards Site 2

UNITED STATES ARMY ENGINEER DISTRICT,
ALASKA
NORTHEAST CAPE, ALASKA
PHASE II REMEDIAL INVESTIGATION
AUGUST 1996



Site 19 Building 109, Mechanic Pit Sampling

UNITED STATES ARMY ENGINEER DISTRICT, ALASKA
NORTHEAST CAPE, ALASKA PHASE II REMEDIAL INVESTIGATION,
AUGUST 1996



Site 19 Building 109, Mechanic Pit Sampling
Doug Quist (Montgomery Watson)



Site 19 Building 109, Mechanic Pit Sampling
Doug Quist (Montgomery Watson)

UNITED STATES ARMY ENGINEER DISTRICT, ALASKA
NORTHEAST CAPE, ALASKA PHASE II REMEDIAL INVESTIGATION
AUGUST 1996



Site 2 North side of Terminal - Danger Asbestos Cancer Sign posting

UNITED STATES ARMY ENGINEER DISTRICT, ALASKA
GAMBELL, ALASKA PHASE II REMEDIAL INVESTIGATION
AUGUST 1996



Site 13 Power Generation Building; Danger Asbestos Sign posting



Site 13 Building 110 Power Plant North Dock, Danger Asbestos Sign posting

UNITED STATES ARMY ENGINEER DISTRICT, ALASKA
NORTHEAST CAPE, ALASKA PHASE II REMEDIAL INVESTIGATION,
AUGUST 1996



Site 13 Building 110, East entrance - Danger Sign Posting

UNITED STATES ARMY ENGINEER DISTRICT, ALASKA
NORTHEAST CAPE, ALASKA PHASE II REMEDIAL INVESTIGATION,
AUGUST 1996



Site 14 Building 98, South Side West Door - Danger Sign Posting



Site 14 Building 98 West Side, South Door - Danger Sign Posting

UNITED STATES ARMY ENGINEER DISTRICT, ALASKA
NORTHEAST CAPE, ALASKA PHASE II REMEDIAL INVESTIGATION,
AUGUST 1996



Site 14 Building 98, West Side South Door - Danger Sign Posting

UNITED STATES ARMY ENGINEER DISTRICT, ALASKA
NORTHEAST CAPE, ALASKA PHASE II REMEDIAL INVESTIGATION,
AUGUST 1996



Site 16 Paint Storage Building, View from South - Danger Sign Posting
MW 16-1 in Foreground, AST 16-1 in Background

UNITED STATES ARMY ENGINEER DISTRICT, ALASKA
NORTHEAST CAPE, ALASKA PHASE II REMEDIAL INVESTIGATION,
AUGUST 1996



Site 17 Building 107, East Side Door - Danger Sign Posting

UNITED STATES ARMY ENGINEER DISTRICT, ALASKA
NORTHEAST CAPE, ALASKA PHASE II REMEDIAL INVESTIGATION,
AUGUST 1996



Site 18 Gym, South Side - Danger Sign Posting



Site 18 Building 101 West, West Side Entrance - Danger Sign Posting

UNITED STATES ARMY ENGINEER DISTRICT, ALASKA
NORTHEAST CAPE, ALASKA
PHASE II REMEDIAL INVESTIGATION
AUGUST 1996



Site 18 Gym, East Door - Danger Sign Posting

UNITED STATES ARMY ENGINEER DISTRICT, ALASKA
NORTHEAST CAPE, ALASKA PHASE II REMEDIAL INVESTIGATION,
AUGUST 1996



Site 18 Building 102, East Door- Danger Sign Posting



Site 18 Building 105, Rec. Building Danger Sign Posting

UNITED STATES ARMY ENGINEER DISTRICT, ALASKA
NORTHEAST CAPE, ALASKA PHASE II REMEDIAL INVESTIGATION,
AUGUST 1996



Site 18 Building 105, North Dock Door - Danger Sign Posting



Site 18 Building 106 Walkway West Side, North Door - Danger Sign Posting

UNITED STATES ARMY ENGINEER DISTRICT, ALASKA
NORTHEAST CAPE, ALASKA PHASE II REMEDIAL INVESTIGATION,
AUGUST 1996



Site 19 Building 108, East Door - Danger Sign Posting



Site 19 Building 108 East Door - Danger Sign Posting

UNITED STATES ARMY ENGINEER DISTRICT, ALASKA
NORTHEAST CAPE, ALASKA PHASE II REMEDIAL INVESTIGATION,
AUGUST 1996



Site 19 Building 109, Southeast Entrance- Danger Sign Posting

UNITED STATES ARMY ENGINEER DISTRICT, ALASKA
NORTHEAST CAPE, ALASKA PHASE II REMEDIAL INVESTIGATION
AUGUST 1996



Site 22: Military Water Well #3



Site 22 Well #4, Military Water Southeast of Main Complex

UNITED STATES ARMY ENGINEER DISTRICT, ALASKA
NORTHEAST CAPE, ALASKA
PHASE II REMEDIAL INVESTIGATION
AUGUST 1996



Site 22: Military Water Well #1

UNITED STATES ARMY ENGINEER DISTRICT, ALASKA
NORTHEAST CAPE, ALASKA PHASE II REMEDIAL INVESTIGATION
AUGUST 1996



Examples of grounded braided copper wire

UNITED STATES ARMY ENGINEER DISTRICT, ALASKA
NORTHEAST CAPE, ALASKA PHASE II REMEDIAL INVESTIGATION
AUGUST 1996



Examples of grounded braided copper wire



Examples of grounded braided copper wire

UNITED STATES ARMY ENGINEER DISTRICT, ALASKA
NORTHEAST CAPE, ALASKA
PHASE II REMEDIAL INVESTIGATION
AUGUST 1996



Examples of grounded braided copper wire

UNITED STATES ARMY ENGINEER DISTRICT, ALASKA
NORTHEAST CAPE, ALASKA
PHASE II REMEDIAL INVESTIGATION
AUGUST 1996



Wire Victims

UNITED STATES ARMY ENGINEER DISTRICT, ALASKA
NORTHEAST CAPE, ALASKA
PHASE II REMEDIAL INVESTIGATION
AUGUST 1996



Wire Victims

UNITED STATES ARMY ENGINEER DISTRICT, ALASKA
NORTHEAST CAPE, ALASKA
PHASE II REMEDIAL INVESTIGATION
AUGUST 1996



Wire Victims

UNITED STATES ARMY ENGINEER DISTRICT, ALASKA
NORTHEAST CAPE, ALASKA PHASE II REMEDIAL INVESTIGATION
AUGUST 1996



Wire Victims

UNITED STATES ARMY ENGINEER DISTRICT, ALASKA
NORTHEAST CAPE, ALASKA PHASE II REMEDIAL INVESTIGATION
AUGUST 1996



Wire Victims



Wire Victims

UNITED STATES ARMY ENGINEER DISTRICT, ALASKA
NORTHEAST CAPE, ALASKA PHASE II REMEDIAL INVESTIGATION
AUGUST 1996



Wire Victims



Wire Victims

UNITED STATES ARMY ENGINEER DISTRICT, ALASKA
NORTHEAST CAPE, ALASKA PHASE II REMEDIAL INVESTIGATION
AUGUST 1996



Wire Victims



Wire Victims

UNITED STATES ARMY ENGINEER DISTRICT, ALASKA
NORTHEAST CAPE, ALASKA PHASE II REMEDIAL INVESTIGATION
AUGUST 1996



Dragging cut wire to garage



Dragging cut wire to garage

UNITED STATES ARMY ENGINEER DISTRICT, ALASKA
NORTHEAST CAPE, ALASKA PHASE II REMEDIAL INVESTIGATION
AUGUST 1996



Other wire exposure



Other wire exposure

UNITED STATES ARMY ENGINEER DISTRICT, ALASKA
NORTHEAST CAPE, ALASKA PHASE II REMEDIAL INVESTIGATION
AUGUST 1996



Other wire exposure

UNITED STATES ARMY ENGINEER DISTRICT, ALASKA
NORTHEAST CAPE, ALASKA PHASE II REMEDIAL INVESTIGATION
AUGUST 1996



Wire Sources: Antenna Range



Wire Sources: Antenna Range

UNITED STATES ARMY ENGINEER DISTRICT, ALASKA
NORTHEAST CAPE, ALASKA PHASE II REMEDIAL INVESTIGATION
AUGUST 1996

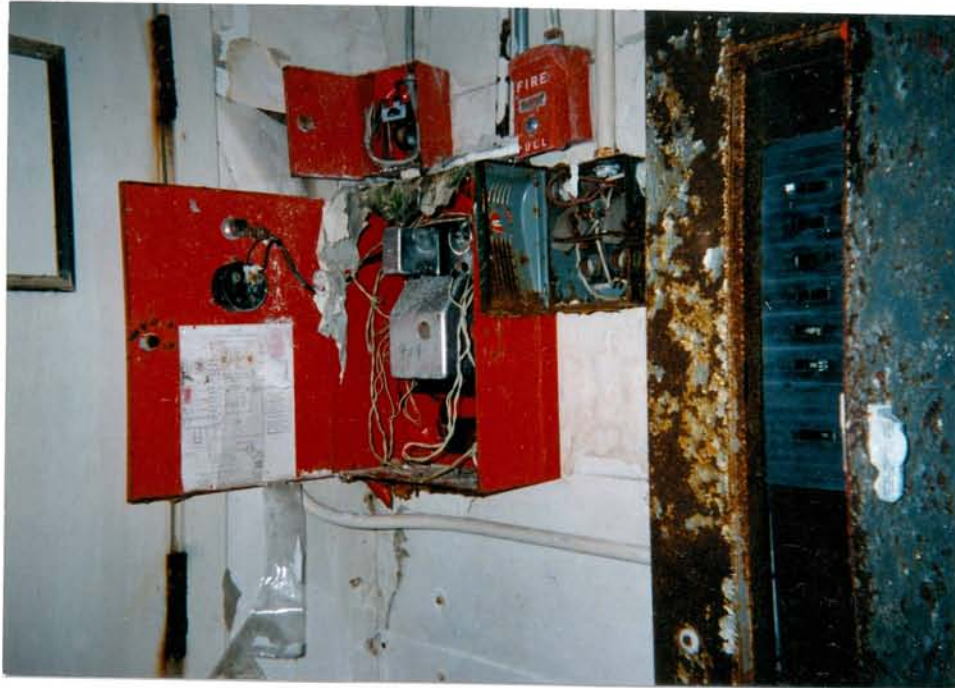


Wire Sources: Antenna Range

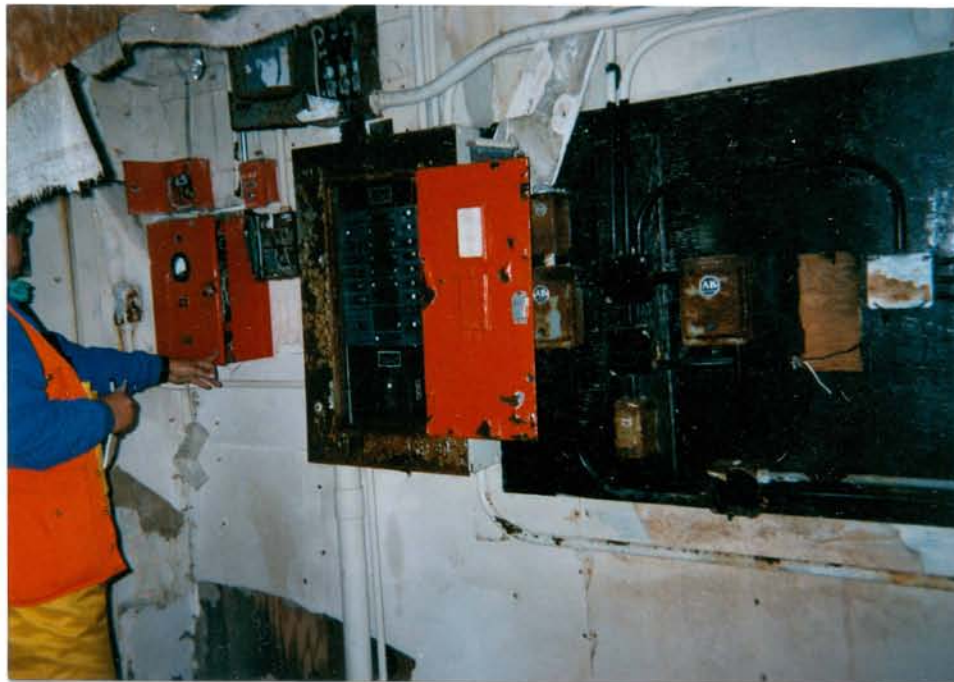


Wire Sources: Antenna Range

UNITED STATES ARMY ENGINEER DISTRICT, ALASKA
NORTHEAST CAPE, ALASKA PHASE II REMEDIAL INVESTIGATION
AUGUST 1996



Switches in Gym, Building 99, Room on North side, East wall group - fire pull, fire alarm, double fuse box



Switch in Gym, Building 99, Room on North Side, East wall group

UNITED STATES ARMY ENGINEER DISTRICT, ALASKA
NORTHEAST CAPE, ALASKA PHASE II REMEDIAL INVESTIGATION,
AUGUST 1996



Switches in Gym, Building 99, Room on North side, East wall group. Square D. Safety
Switch, single throw

UNITED STATES ARMY ENGINEER DISTRICT, ALASKA
NORTHEAST CAPE, ALASKA
PHASE II REMEDIAL INVESTIGATION
AUGUST 1996



Switches in Gym, Building 99, Room on North side, West wall group. Switch/Fuse Box

UNITED STATES ARMY ENGINEER DISTRICT, ALASKA
NORTHEAST CAPE, ALASKA
PHASE II REMEDIAL INVESTIGATION
AUGUST 1996



Switches in Gym, Building 99, Room on North side

UNITED STATES ARMY ENGINEER DISTRICT, ALASKA
NORTHEAST CAPE, ALASKA, PHASE II REMEDIAL
INVESTIGATION
AUGUST 1986



Site 14 Building 98, Debris littered Stairwell Leading to BUS Walkway
East to Building 101 West

UNITED STATES ARMY ENGINEER DISTRICT, ALASKA
NORTHEAST CAPE, ALASKA PHASE II REMEDIAL INVESTIGATION,
AUGUST 1996



Site 14 - Building 98 S. E. Entrance to Stairwell, Heading to Basement Pumping



Site 14 Building 98 Trash Pump Set-up

UNITED STATES ARMY ENGINEER DISTRICT, ALASKA
NORTHEAST CAPE, ALASKA PHASE II REMEDIAL INVESTIGATION,
AUGUST 1996



Site 14 From bottom of stairwell (Bldg98) looking East toward Building 101 West



Site 14 Building 98, Effluent of water being pumped from flooded walkway

UNITED STATES ARMY ENGINEER DISTRICT, ALASKA
NORTHEAST CAPE, ALASKA PHASE II REMEDIAL INVESTIGATION,
AUGUST 1996



Site 18 Building 101 West - Stairwell leading to flooded walkway of Building 98 East



Site 18 Building 101, Preparing to sample sludge in "flooded" walkway to Building 98 (now pumped)

UNITED STATES ARMY ENGINEER DISTRICT, ALASKA
NORTHEAST CAPE, ALASKA PHASE II REMEDIAL INVESTIGATION,
AUGUST 1996



Site 18 Stairwell to corridor joining Site 14

UNITED STATES ARMY ENGINEER DISTRICT, ALASKA
NORTHEAST CAPE, ALASKA PHASE II REMEDIAL INVESTIGATION
AUGUST 1996



Site 16: Paint Dope Storage Building, Overpacks 16-2, 16-3, 16-4, 16-5, and 16-6. Unknown contents.



Site 16: Paint Dope Storage Building, Overpacks 16-2, 16-3, 16-4, 16-5, and 16-6. Unknown contents

UNITED STATES ARMY ENGINEER DISTRICT, ALASKA
NORTHEAST CAPE, ALASKA
PHASE II REMEDIAL INVESTIGATION
AUGUST 1996



Site 17 Building 111: General Warehouse, Military
Dishwasher, Compound 20, 25 pound tubs

UNITED STATES ARMY ENGINEER DISTRICT, ALASKA
NORTHEAST CAPE, ALASKA PHASE II REMEDIAL INVESTIGATION
AUGUST 1996



Site 18 Building 101 west, Military Decontamination Solution (Chemical agent) STB, DS2

UNITED STATES ARMY ENGINEER DISTRICT, ALASKA
NORTHEAST CAPE, ALASKA
PHASE II REMEDIAL INVESTIGATION
AUGUST 1996



Site 19 Building 109: Military Aircraft, wash compound

UNITED STATES ARMY ENGINEER DISTRICT, ALASKA
NORTHEAST CAPE, ALASKA PHASE II REMEDIAL INVESTIGATION
AUGUST 1996



Site 19 Building 109: Smoke pots

UNITED STATES ARMY ENGINEER DISTRICT, ALASKA
NORTHEAST CAPE, ALASKA PHASE II REMEDIAL INVESTIGATION
AUGUST 1996



Site 22: Well #2 in pump, Station 114, West of Building 113



Site 22 Building 113, 150 gallon cans of asbestos paint

UNITED STATES ARMY ENGINEER DISTRICT, ALASKA
NORTHEAST CAPE, ALASKA
PHASE II REMEDIAL INVESTIGATION
AUGUST 1996



Tar Spill, South of Site 22, East side of Gravel Pad

UNITED STATES ARMY ENGINEER DISTRICT, ALASKA
NORTHEAST CAPE, ALASKA PHASE II REMEDIAL INVESTIGATION
AUGUST 1996



Tractor - South of Airstrip Gravel Pad, looking South



Tractor - South of Airstrip Gravel Pad, looking East.

UNITED STATES ARMY ENGINEER DISTRICT, ALASKA
NORTHEAST CAPE, ALASKA PHASE II REMEDIAL INVESTIGATION
AUGUST 1996



Tractor - South of Airstrip Gravel Pad, looking North



Tractor - South of Airstrip Gravel Pad, looking West

UNITED STATES ARMY ENGINEER DISTRICT, ALASKA
NORTHEAST CAPE, ALASKA PHASE II REMEDIAL INVESTIGATION
AUGUST 1996



Mobilization of Field Equipment from Nome

UNITED STATES ARMY ENGINEER DISTRICT, ALASKA
NORTHEAST CAPE, ALASKA PHASE II REMEDIAL INVESTIGATION
AUGUST 1996



Unloading DC-3 at Northeast Cape, Alaska



Unloading of DC-3 at Northeast Cape, Alaska